



MARS



Investing in rural people

SUSTAINABLE FARMING IN TROPICAL
ASIAN LANDSCAPES (SFITAL)

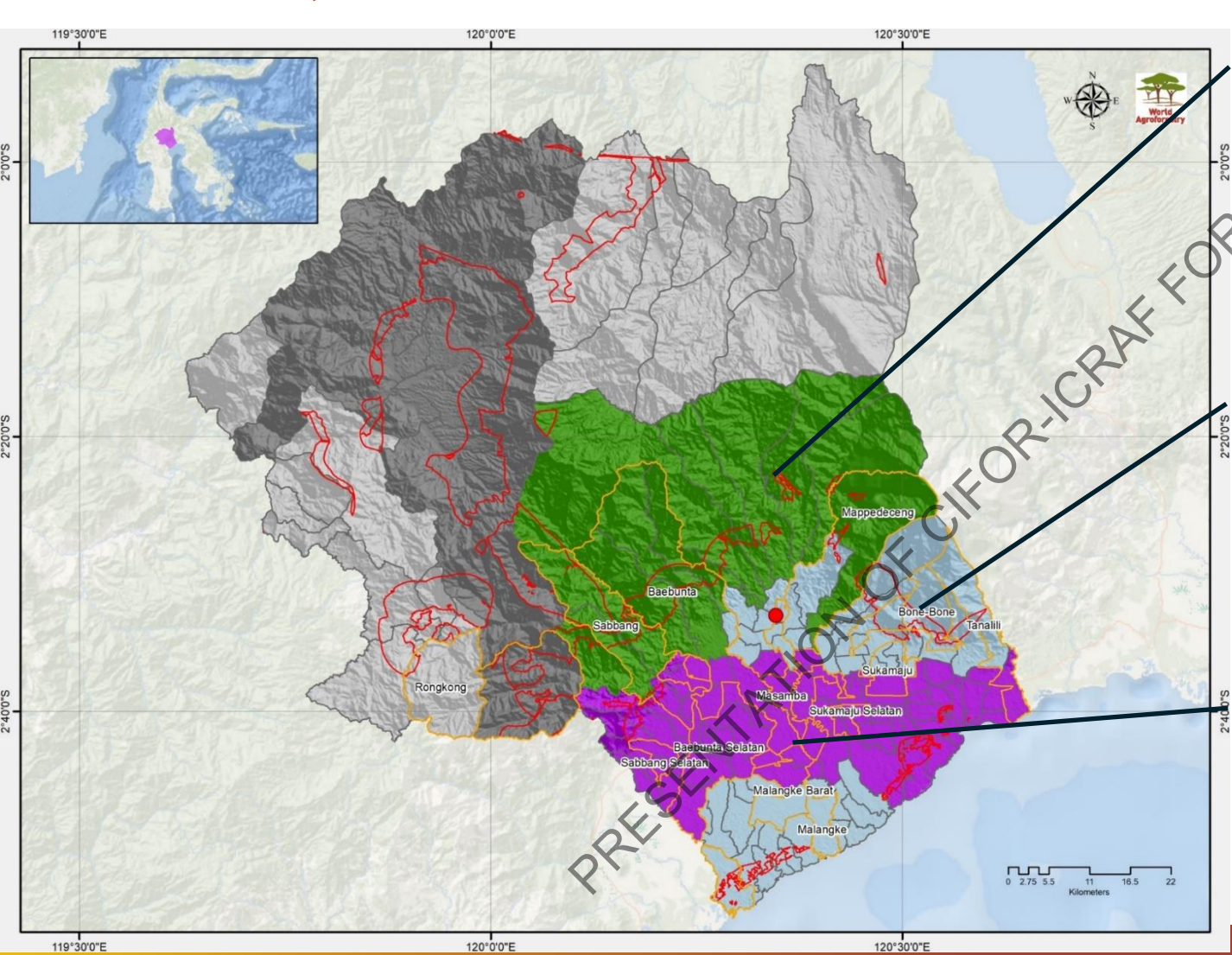
Topic 2: Cacao agroforestry practices in SFITAL site in Indonesia: North Luwu

26 June 2024

Endri Martini
Agroforestry System and Extension Scientist
CIFOR-ICRAF Indonesia



Brief condition and issues cacao agroforestry systems in Luwu Utara District, South Sulawesi Province, Indonesia



Dominance of cacao agroforestry (cacao-durian; cacao-fruit trees)

Dominance of cacao agroforestry (cacao-durian, cacao coconut)

Dominance of cacao agroforestry (cacao-durian, cacao-coconut)

Table 1. Analysis of C and N levels in cacao agroforestry, cacao monoculture, and secondary forest land covers in North Luwu.

Code	Organic Matter		C/N
	Walkley Black C %	Kjeldahl N %	
Cacao Agroforestry (CA)	2.53	0.11	23
Cacao Monoculture (CM)	2.18	0.16	13
Secondary Forest (SF)	2.16	0.11	20



General cacao garden management in North Luwu

SUSTAINABLE FARMING IN TROPICAL
ASIAN LANDSCAPES (SFITAL)

Cacao agroforestry systems are implemented in 80% of the cacao farms in the landscape



Intervention on improvement of soil fertility applied in learning gardens

SUSTAINABLE FARMING IN TROPICAL
ASIAN LANDSCAPES (SFITAL)



Cluster 7:

Issues with soil fertility are overused of chemical herbicides and fertilizer

Intervention: no herbicides and application of composting



Cluster 2:

Issues with soil fertility are overused of chemical herbicides, soil erosion

Intervention: no herbicides, application of composting and planting soil covercrop to reduce erosion.

Thank You

www.darikebunkelanskapsehat.id | www.cacaomustahan.com



MARS



**Sustainable Farming in Tropical
Asian Landscapes (SFITAL)**